

Picture showing S CRIMP 240 EVO SCE



S CRIMP 240 EVO

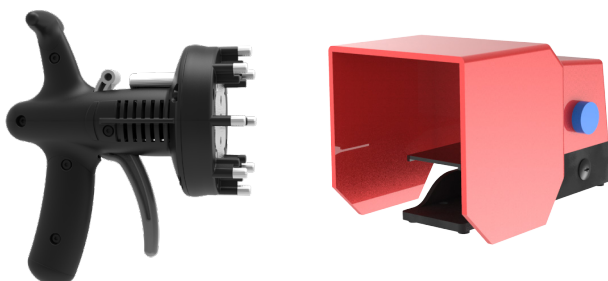
3 Types of controlers - Easy to use - Compact

Features

- Easy to use and robust
- Radial die movement
- High crimping force
- Extensive range of dies to suit crimping of hydraulic hoses
- Easy set up and maintenance
- Fast and reliable
- Smart Control (SC) panel as standard

Options

- Quick change gun (plastic or aluminum)
- Special dies (Marking, brake and air conditioning hoses)
- Die storage panel or table
- Electrical footswitch
- SCE and SCS computers available
- Mechanical backstop



Technical features

Capacity	2" 4SP
Crimp range	4 - 76 mm
Crimp force	240 t
Opening with dies	+38 mm
Complete opening	118 mm
Master-die length	100 mm
Motor	4 kW
Dimensions	765x400x650 mm
Weight	165 kgs
Voltages available	220-240V 3Ph & 1Ph 380-415V 3Ph 50/60 Hz